



PROFILE

Passionate and dedicated in achieving innovative, engaging interiors. I approach design as a human centered discipline, striving to create spaces that have impact through the application of functional, social and environmental sustainability. With 6+ years of design experience creating interiors for commercial & residential use, I have participated in development of conceptual ideation through to design, working drawings and project execution. I am communicative, collaborative and a detailed oriented individual who is committed to my continual growth as a designer.

Toronto, Ontario / marleyroppolo@gmail.com / 647-202-3387 / [I linkedin.com/in/marley-roppolo](#)

EDUCATION

**Bachelor or Interior Design (Honours)**  
Humber College  
CIDA-Accredited Program  
Etobicoke, ON / 2012-2016

**Bachelor of Arts (Sociology)**  
Trent Univesity  
Peterborough, ON

CREDENTIALS

**NCIDQ (in process)**  
IDFX - completed  
IDPX - completed  
PRAC - preparing

ASSOCIATIONS

ARIDO Intern  
IDC Intern

EXPERIENCE

**Intermediate Designer**  
Shields + Associates Interior Design Consultant / Toronto / 2019 - Current

**Freelance**  
Toronto / 2020/2021

**Junior Designer**  
Shields + Associates Interior Design Consultant / Toronto / 2016-2019

**Design Intern**  
Esqape Design / Toronto / 2015

**Design Intern**  
Shields + Associates Interior Design Consultant / Toronto / 2015

VOLUNTEER

**Furniture Bank** / Toronto ON  
A charitable organization and social enterprise that redistributes furniture to people in marginalized communities

**Scotiabank Nuit Blanche** / Toronto ON  
Project: Paper Orbs (interactive installation)  
Production Team Member

PROGRAMS

<b>CAD</b>	AutoCad / Sketchup / Revit (begginer)
<b>Adobe CC</b>	Photoshop / InDesign / Illustrator
<b>Rendering</b>	V-Ray
<b>Microsoft Office</b>	Word / PowerPoint / Excel

SKILLS

Conceptual design / Design illustration / Design presentation

Space planning / Ontario Building Code / Detail drawings / Construction drawings / Bid process & documentation

Specifications / FF&E

Communication / Interpersonal / Collaboration

# CONTENTS

## PROFESSIONAL PROJECTS

01	RESIDENTIAL DESIGN		CONDO SUITE
02	COMMERCIAL DESIGN		CORRIDOR + LOBBY
03	COMMERCIAL DESIGN		MULTI RESIDENTIAL AMENITIES
04	COMMERCIAL DESIGN		LOBBY
05	COMMERCIAL DESIGN		CORRIDORS
06	COMMERCIAL DESIGN		LOBBY + SOCIAL ROOM

## SCHOOL PROJECTS

07	INSTITUTIONAL DESIGN		SCHOOL
08	HOSPITALITY DESIGN		RESTAURANT
09	DESIGN CHARRETTE		RESTAURANT



## RESIDENTIAL DESIGN

## CONDO SUITE

**Project Description**

Condo suite renovation for a young professional in a Toronto west-end neighbourhood. The project was approached with functionality at the forefront. The client, who exclusively works from home, desired a space to accommodate a separate work area, an increase in storage for a clutter free aesthetic and an open kitchen/living area for a social atmosphere. By using clean lines, neutral tones and a focus on fixed furniture a modern and spacious design was achieved.

**Location:** Toronto, ON

**Project Area:** 700 sq.ft.

**Project Type:** Design Build

**Role:**  
concept development

finish selection and presentation

specifications: finishes, lighting,  
hardware, furnishings

construction drawings - plans,  
elevations, details

project management

**Tools:**  
AutoCad / Photoshop / Illustrator /  
SketchUp / V-Ray



# DESIGN PLAN

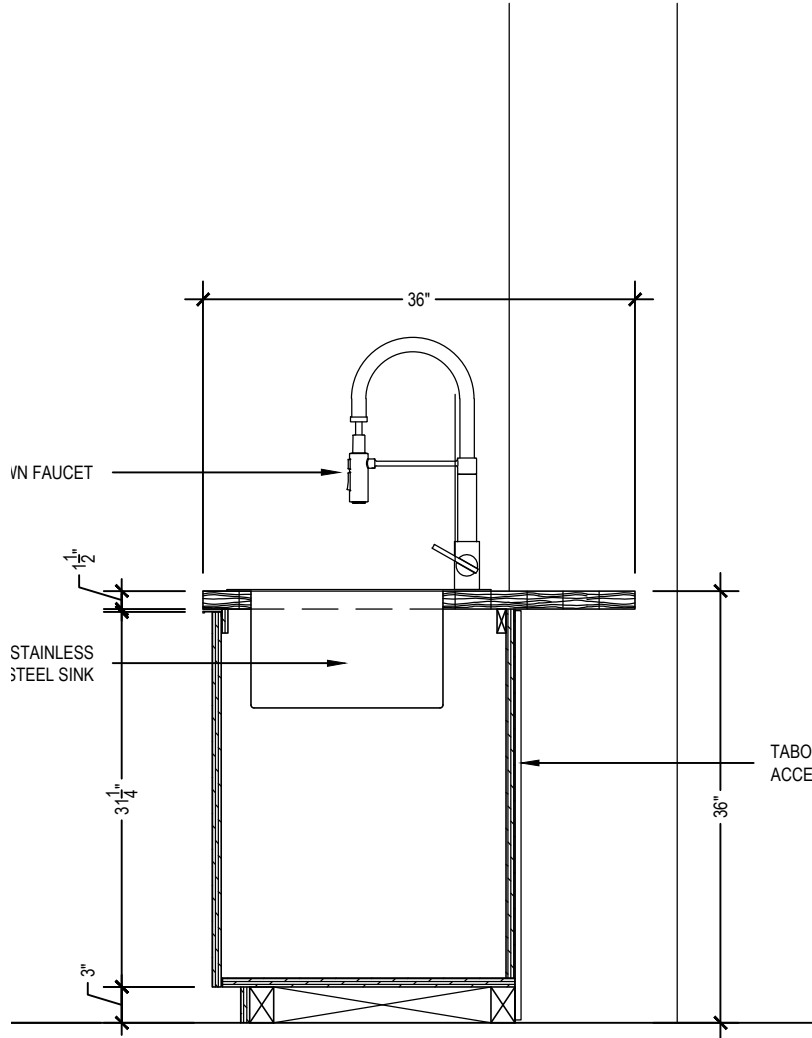


## /





KITCHEN  
SECTION  
ILLUSTRATION



B.1 - SECTION THROUGH KITCHEN ISLAND



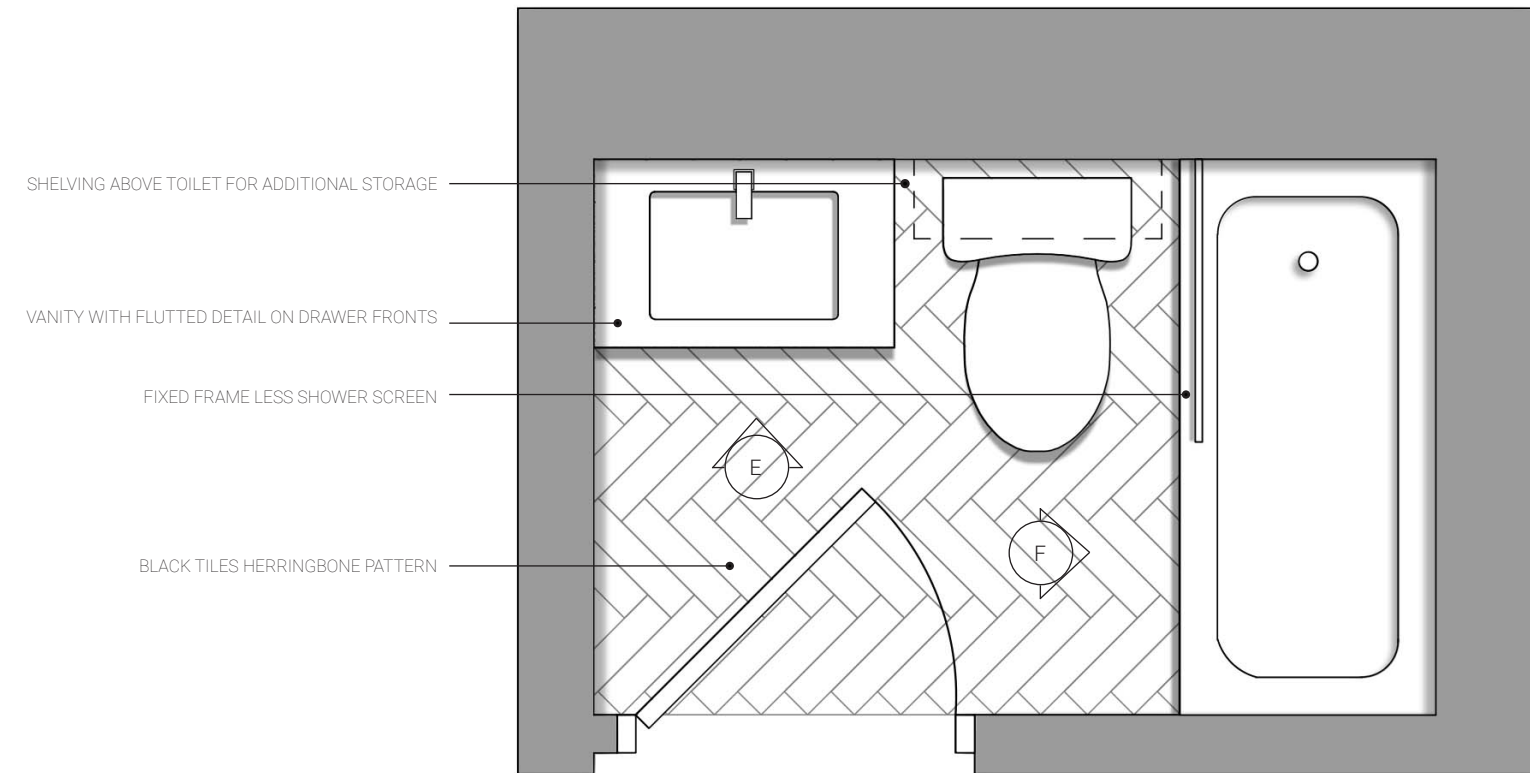
VISUALIZATION BY MARLEY ROPPOLO

LIVING ROOM  
ILLUSTRATION

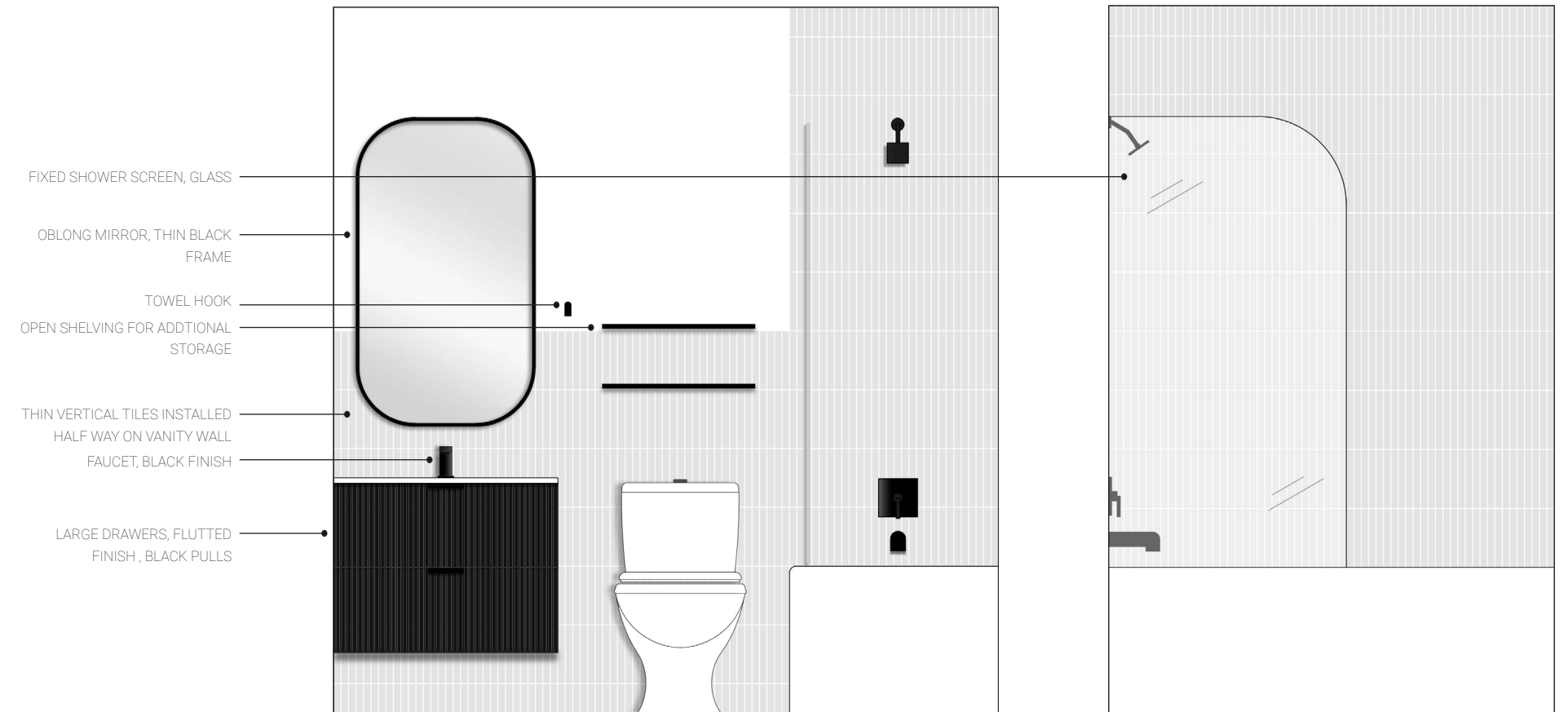


VISUALIZATION BY MARLEY ROPPOLO

# BATHROOM PLAN ELEVATIONS



BATHROOM PLAN



E - BATHROOM VANITY ELEVATION

F - BATHROOM TUB/SHOWER ELEVATION



COMMERCIAL DESIGN  
MULTIFAMILY

CORRIDORS + LOBBY

Project Description

Corridor design of a high rise Multi-family building. Modern and bright design concept throughout corridors. Design features include new suite doors & surround, hardware, suite signage, textured accent wall covering at elevator lobbies, light fixtures throughout corridors, directional signage, carpet and floor tile at elevator lobbies.

**Location:** Etobicoke, ON

**Project Area:** 22 storey residential building

**Project Type:** Design-Bid-Build

**Role:**

Concept development

Finish selection and presentation

Specifications: finishes, lighting,  
hardware, signage

Construction drawings - plans,  
elevations, sections, details

Bid process - drawings, documents,  
Contractor site walk-through

**Tools:**

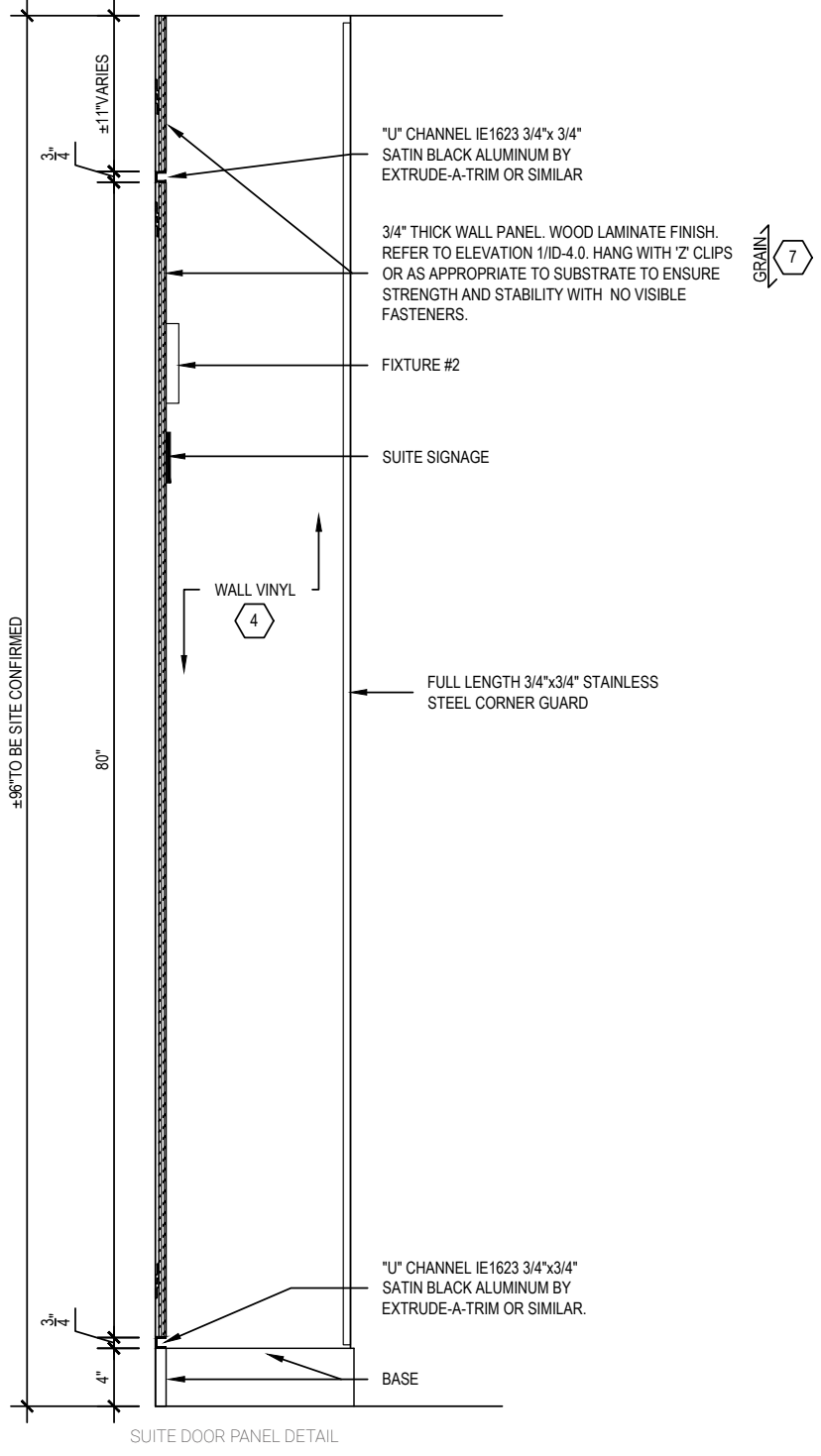
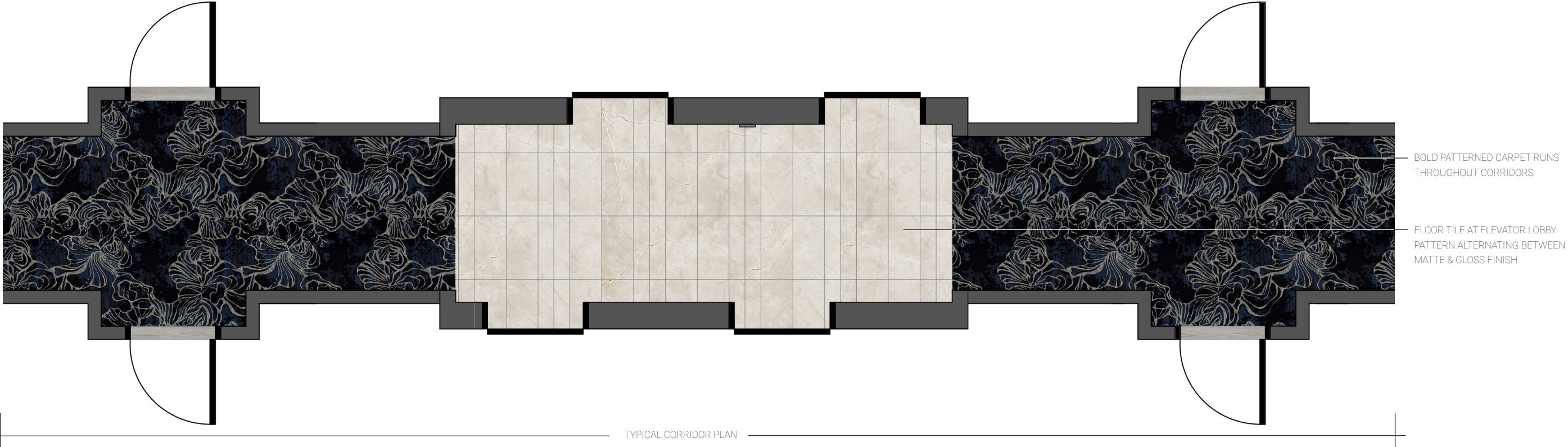
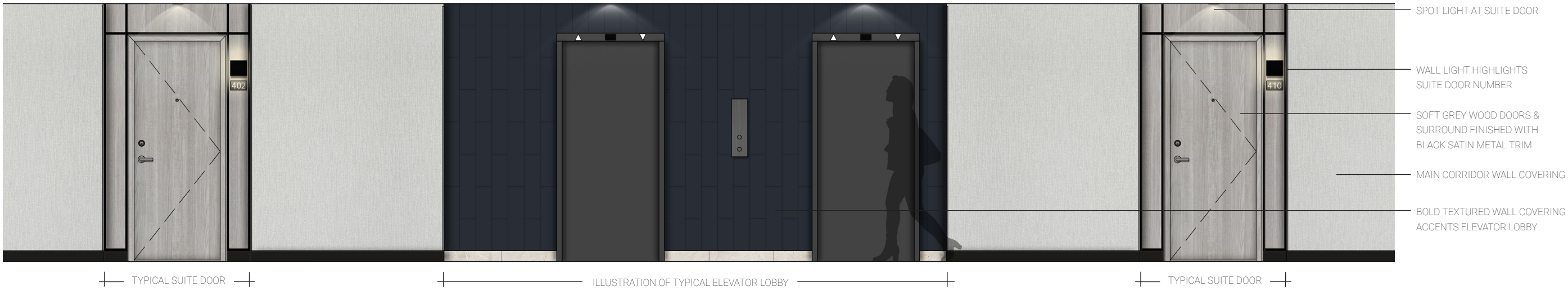
AutoCad / Photoshop / InDesign



VISUALIZATION BY OTHERS

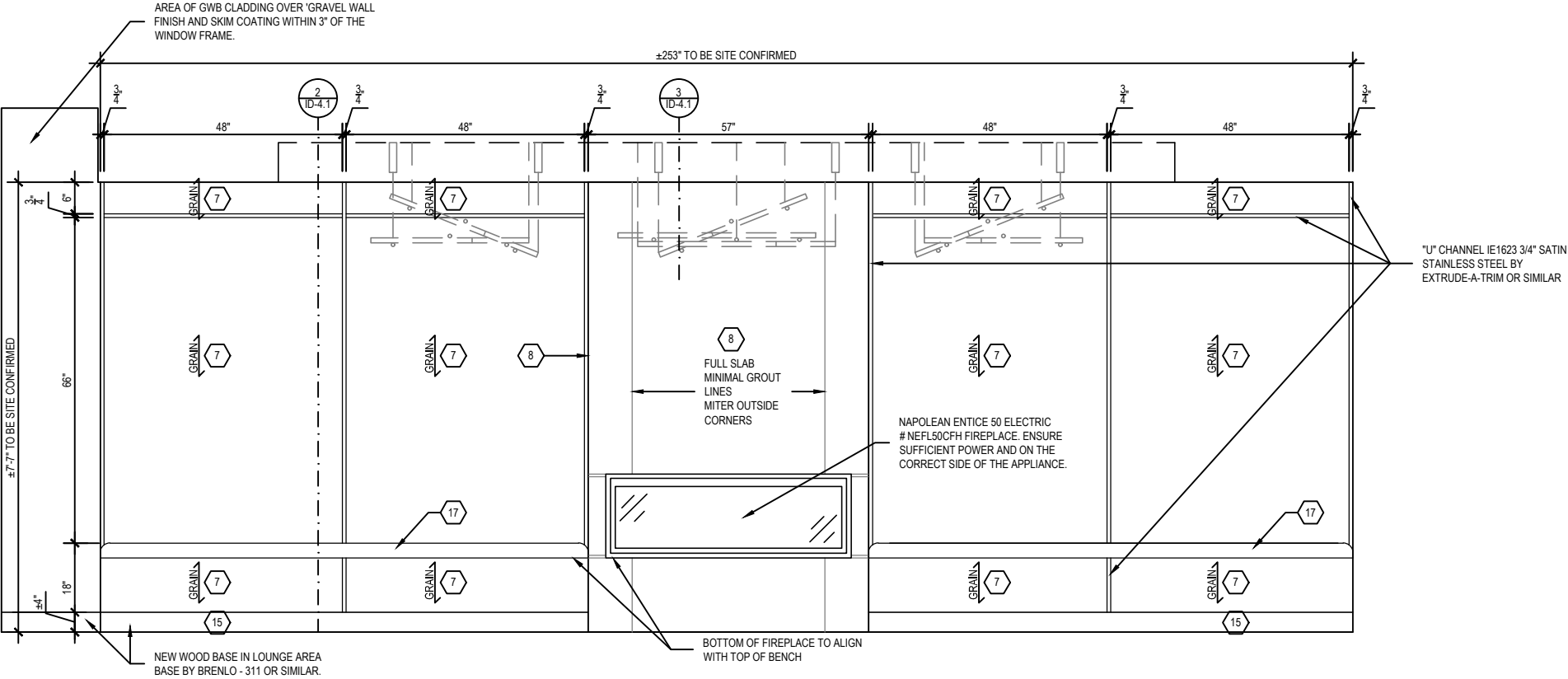


DESIGN  
ELEVATION  
PLAN  
DETAIL





DETAIL & ILLUSTRATION



BENCH SEATING & FIREPLACE ELEVATION



VISUALIZATION BY OTHERS



COMMERCIAL DESIGN

MULTI RESIDENTIAL  
AMENITIES

Project Description

A redesign of a ground floor condominium pool and changing rooms. The pool, a space well used by residents, had good bones but was in need of a refresh of finishes and lighting. A modern design scheme was applied to the pool area using cool concrete tiling and a bold textured deep blue wall for interest. The layout of the changing rooms were re-designed to accommodate barrier free requirements. The pool design was carried through to both changing rooms for cohesiveness between the spaces.

**Location:** Oakville, ON

**Project Area:** 2000 Sq.ft.

**Project Type:** Design-Bid-Build

**Role:**  
Concept Development

Finish selection and Presentation

Specifications: finishes, lighting, FF&E,

Construction Drawings - plans,  
elevations, sections, details

Bid process - drawings/documents

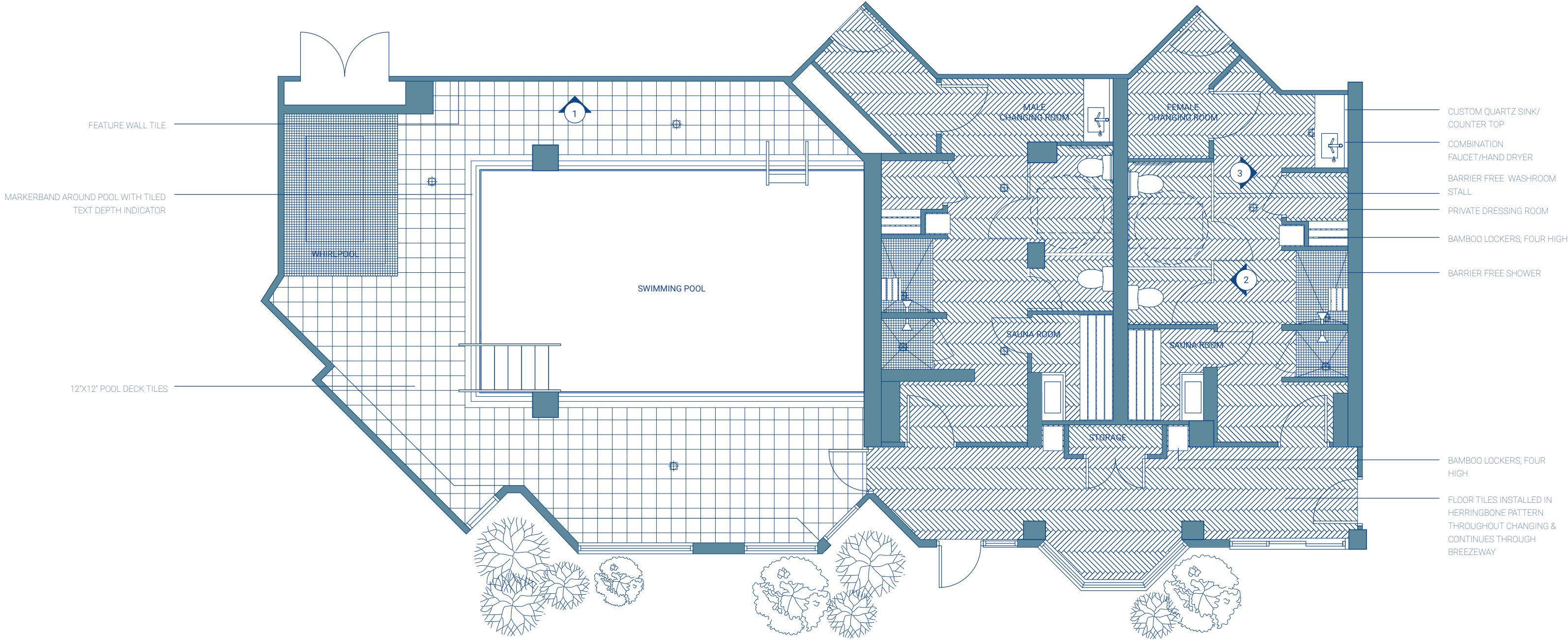
Permit drawings/documents

**Tool:**  
AutoCad / Photoshop / Illustrator /InDesign



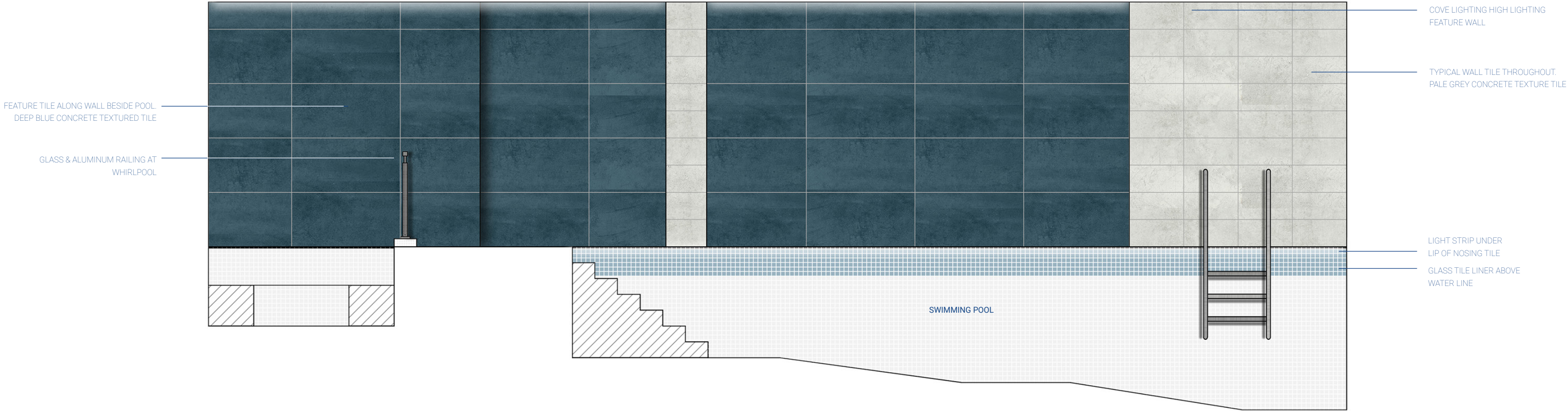
VISUALIZATION BY OTHERS

DESIGN  
PLAN /





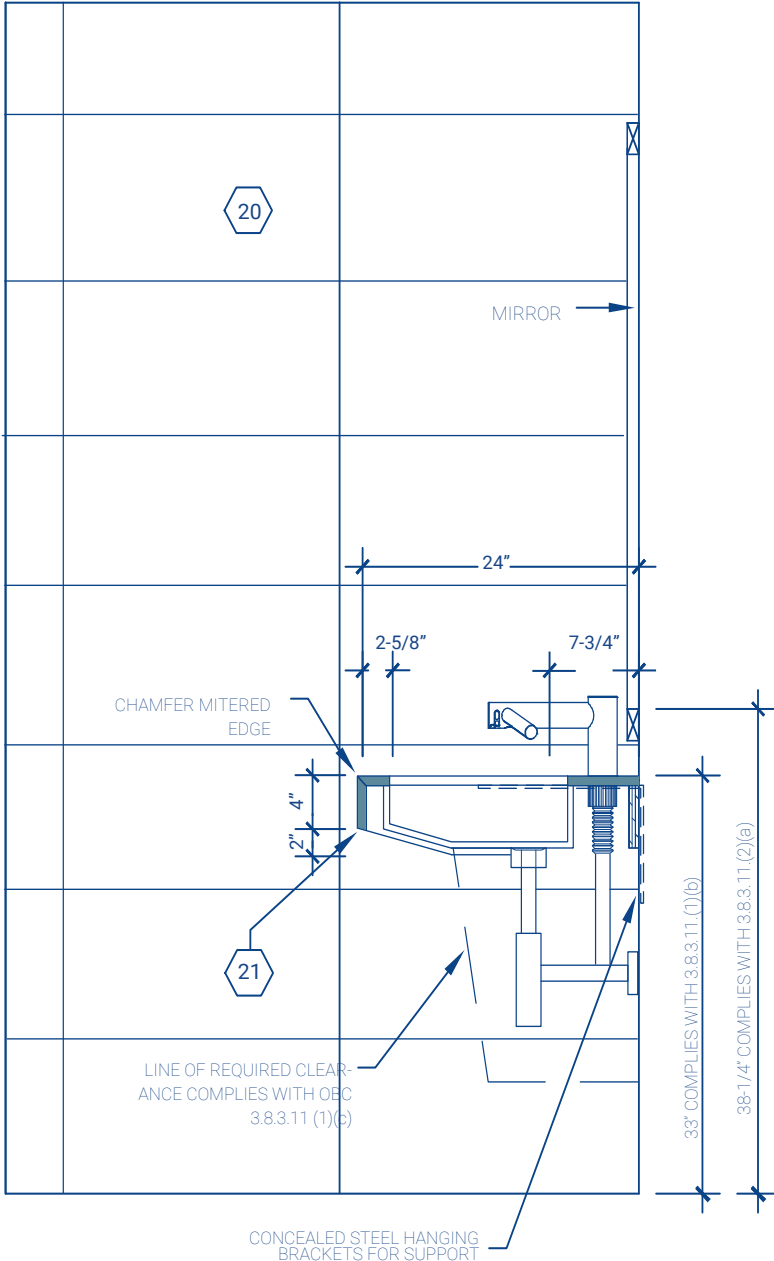
DESIGN  
ELEVATION /



## /



DETAIL &  
ILLUSTRATION /



4 MILLWORK 501: SECTION THROUGH VANITY



VISUALIZATION BY OTHERS



COMMERCIAL DESIGN

LOBBY

Project Description

Located in a busy Toronto neighborhood north of Harbourfront this high-rise residential building lobby & common spaces were in need of a rework in layout and finishes. The result better utilizes and modernizes the space to better accompany other high rise residential towers in the area. The new layout accommodates a larger concierge desk, dedicated package storage room, an additional office/meeting space.

**Location:** Toronto, ON

**Project Area:** 1750 Sq.ft.

**Project Type:** Design-Bid-Build

**Role:**  
Space planning

Concept Development

Finish selection and Presentation

Specifications: finishes, FF&E,

Construction Drawings - plans, elevations, sections, details

Bid process - drawings/documents

Permit drawings/documents

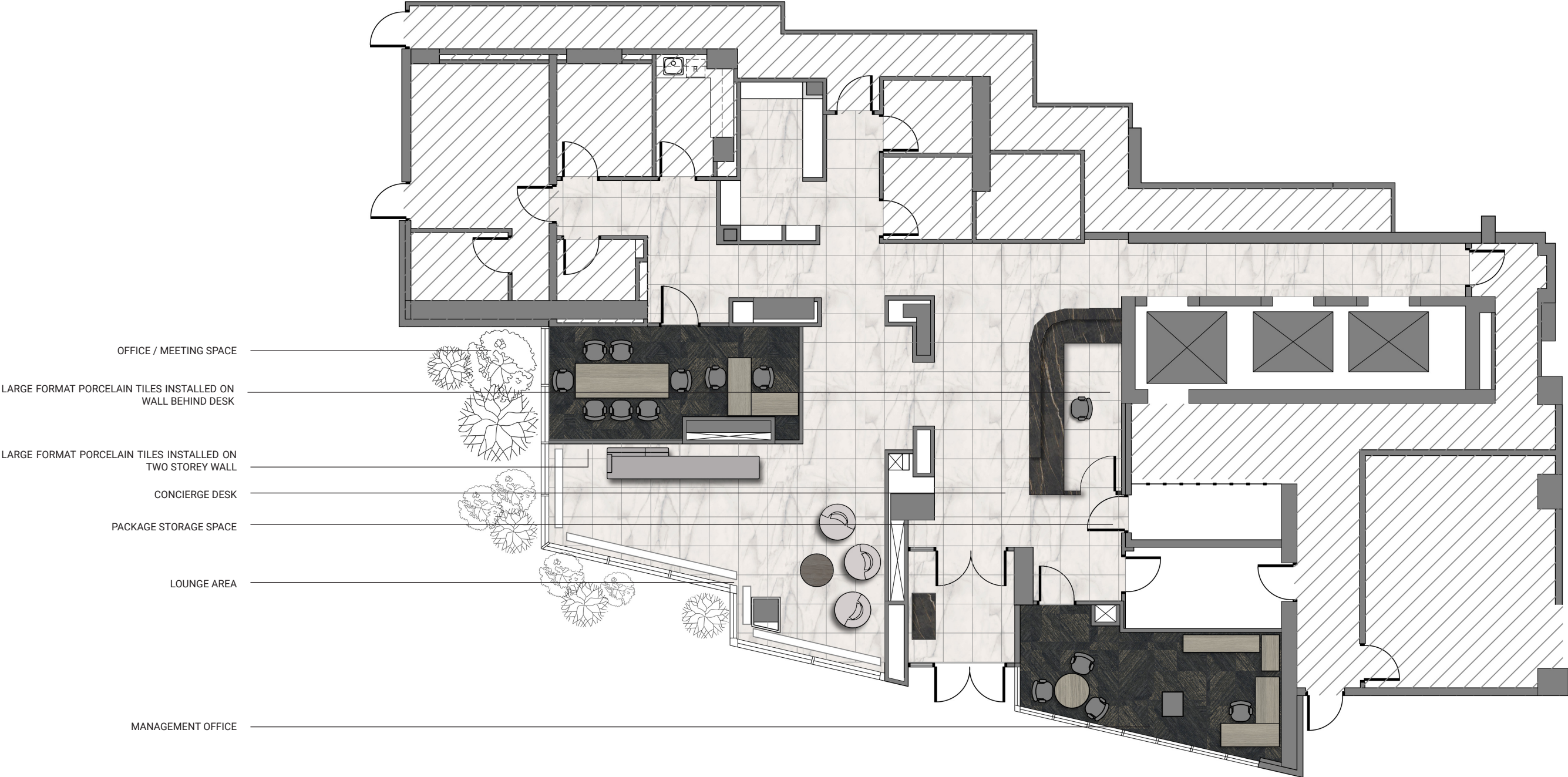
Project management

**Tools:** AutoCad / Photoshop



CONCEPT VISUALIZATION BY OTHERS

DESIGN  
PLAN /





DESIGN  
ELEVATIONS /



ELEVATION - LOBBY WAITING / LOUNGE SPACE

LARGE FORMAT PORCELAIN TILES SPANNING 20' HEIGHT TILES  
INSTALLED IN ALTERNATING PATTERN WITH METAL TRIM BETWEEN



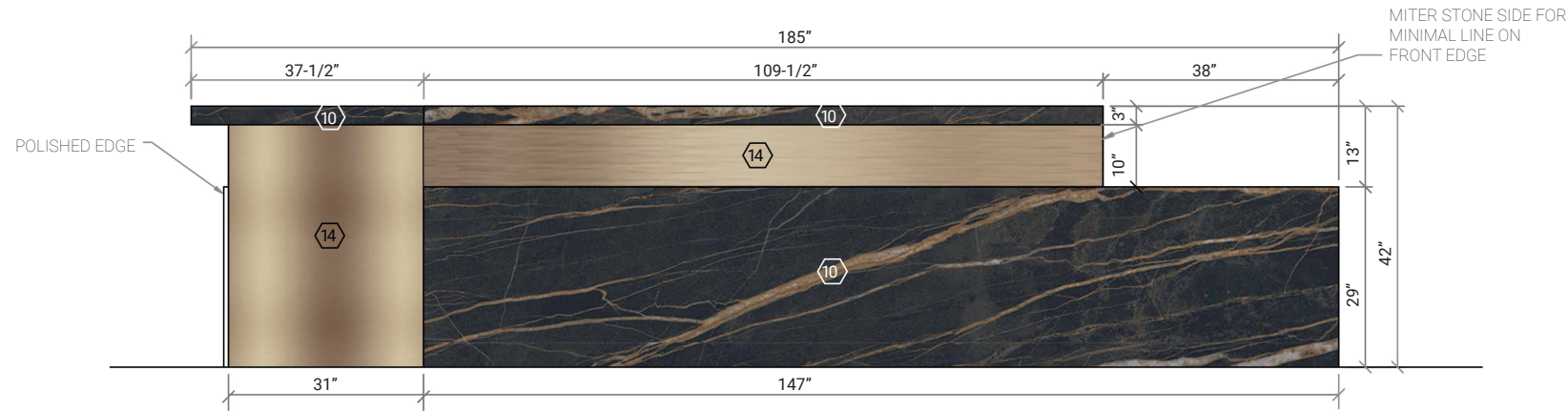
ELEVATION - CONCIERGE DESK

LIGHT PENDANT INSTALLED ABOVE DESK

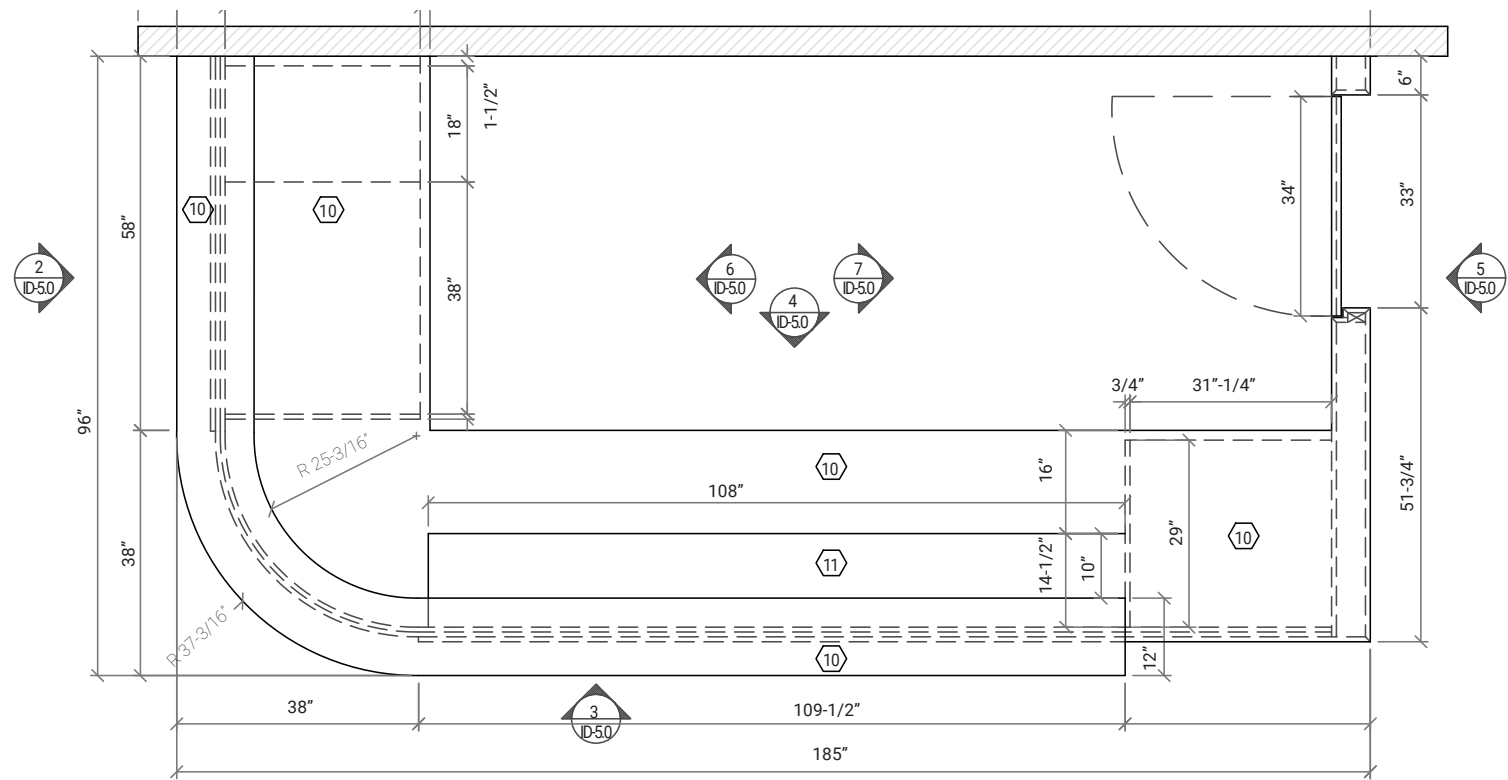
LARGE SCALE PORCELAIN TILES, POLISHED FINISH,  
INSTALLED IN PATTERN SEPARATED BY METAL TRIM

NEW DESK WITH BARRIER FREE COUNTER HEIGHT

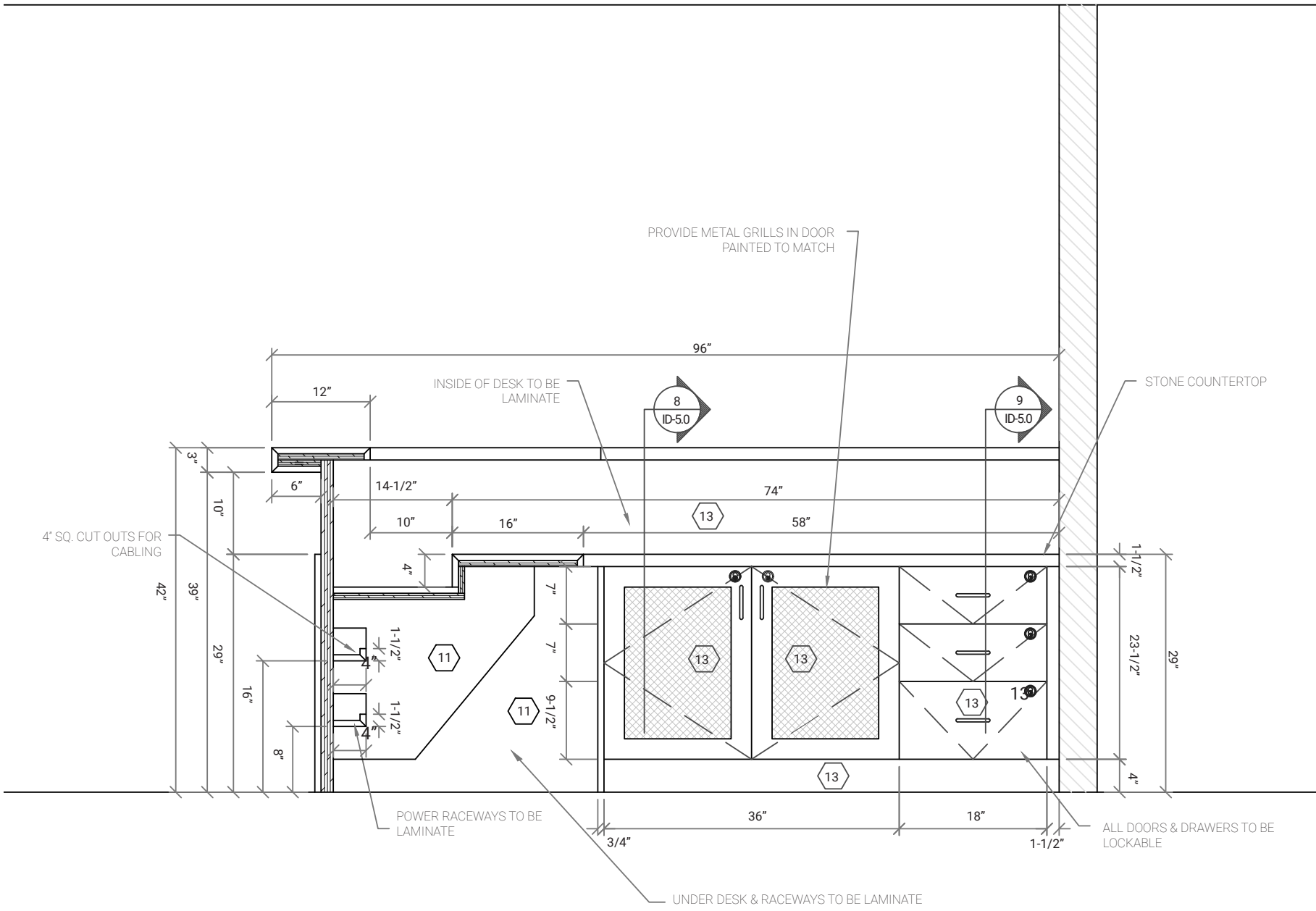
DESK  
DETAILS



3 MILLWORK 501: SECURITY DESK OUTSIDE ELEVATION  
ID/5.0 SCALE: 1/2"=1'-0"



1 MILLWORK 501: PLAN  
ID/5.0 SCALE: 1/2"=1'-0"



6 MILLWORK 501: SECURITY DESK INSIDE ELEVATION & MONITOR WELL SECTION  
ID/5.0 SCALE: 3/4"=1'-0"



COMMERCIAL DESIGN  
MUTIFAMILY

CORRIDORS

Project Description

Corridor design of a ten story mid rise residential building. Clean modern design concept throughout corridors. Design features include new suite doors & surround, hardware, suite signage, textured accent wall covering at suite doors & elevator lobby, panelling at elevator door surround, light fixtures, directional signage, carpet and floor tile at elevator lobbies.

**Location:** Richmond Hill, ON  
**Project Area:** 10 story residential building  
**Project Type:** Design-Bid-Build

- Role:**  
Concept development
- Finish selection and presentation
- Specifications: finishes, lighting, hardware, signage
- Construction drawings - plans, elevations, sections, details
- Bid process - drawings, documents, contractor site walk-through

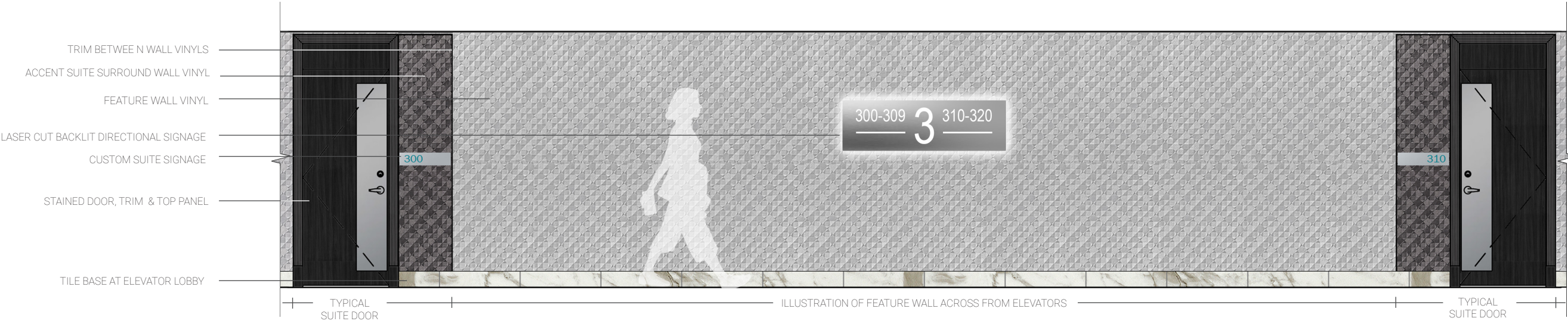
**Tools:**  
AutoCad / Photoshop / InDesign



CONCEPT VISUALIZATION BY OTHERS

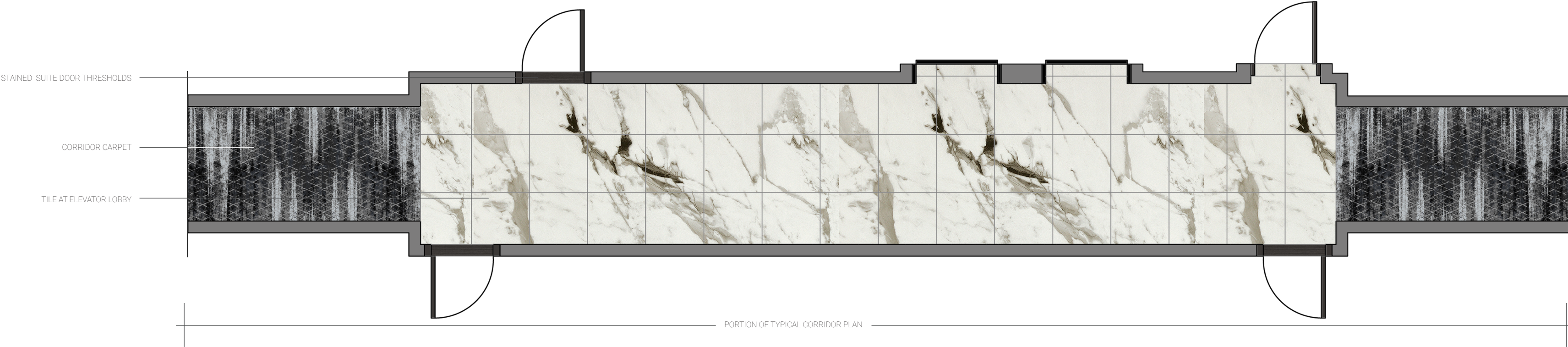


DESIGN  
ELEVATIONS





DESIGN  
PLAN /





COMMERCIAL DESIGN

LOBBY & SOCIAL ROOM

Project Description

An updated layout provides the concierge with direct entrance sight lines and plenty of storage for a high volume of packages received on a daily basis. A light sophisticated palette is applied to the space accented with warm wood, soft golds and bold blues. A fun floor pattern is carried throughout the ground floor.

**Location:** Toronto, ON

**Project Area:** 1800 Sq.ft. (lobby)

**Project Type:** Design-Bid-Build

**Role:**  
Space planning /Concept Development

Finish selection and Presentation

Specifications: finishes, FF&E,

Construction Drawings - plans, elevations, sections, details

Bid process - drawings/documents

Permit drawings/documents

Project management

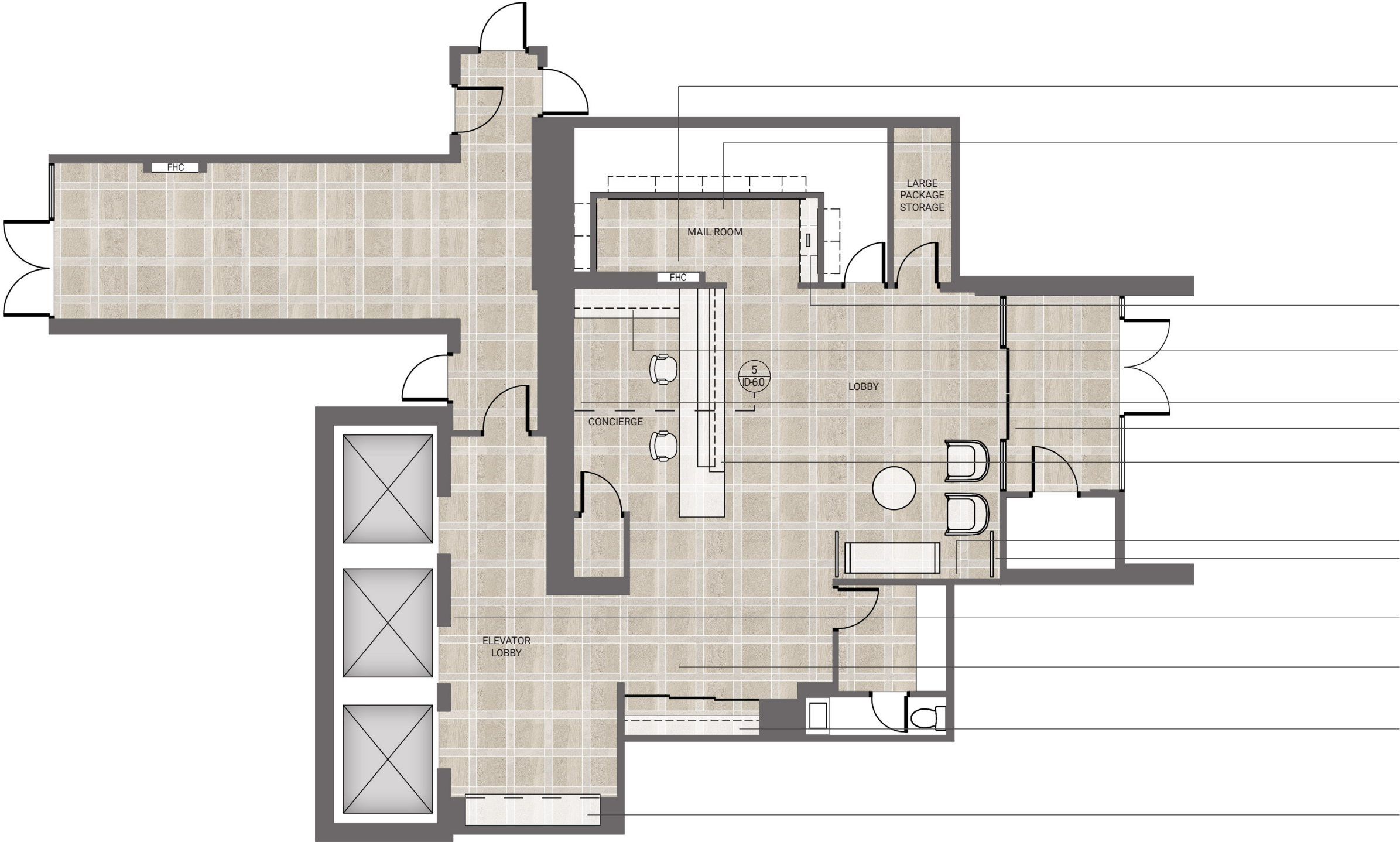
**Tools:** AutoCad / Photoshop



CONCEPT VISUALIZATION BY OTHERS



DESIGN  
PLAN /



- RELOCATED FHC TO ACCOMODATE DESK RELOCATION
- NEW FRONT & BACK LOADING MAILBOXES TO CREATE SMALLER MAIL ROOM AND NEW STORAGE ROOM
- LEDGE WITH PAPER WASTE RECEPTACLE BELOW
- STORAGE
- FEATURE STONE WALL
- GLASS SLIDING DOORS
- CUSTOM DESK WITH ACCESSIBLE COUNTER HEIGHT & MONITOR WELL
- FEATURE STONE WALL
- CUSTOM LASER CUT METAL SCREEN
- FEATURE STONE WALL AT ELEVATORS
- NEW FLOOR TILE & PATTERN THROUGHOUT LOBBY
- BUILT-IN MILLWORK WITH LOCKABLE SLIDING DOORS FOR SECURITY GUARD STORAGE
- COVE WITH BUILT IN SEATING

DESIGN  
ELEVATIONS /

PENDANT LIGHTS

FEATURE STONE WALL  
POLISHED FINISH WITH REVEALS

COVE WITH BENCH SEATING



ELEVATION: LOUNGE WAITING AREA & BUILT IN COVE SEATING AT ELEVATOR LOBBY

FEATURE LIGHT AT ELEVATORS

PAINTED COVE SURROUND

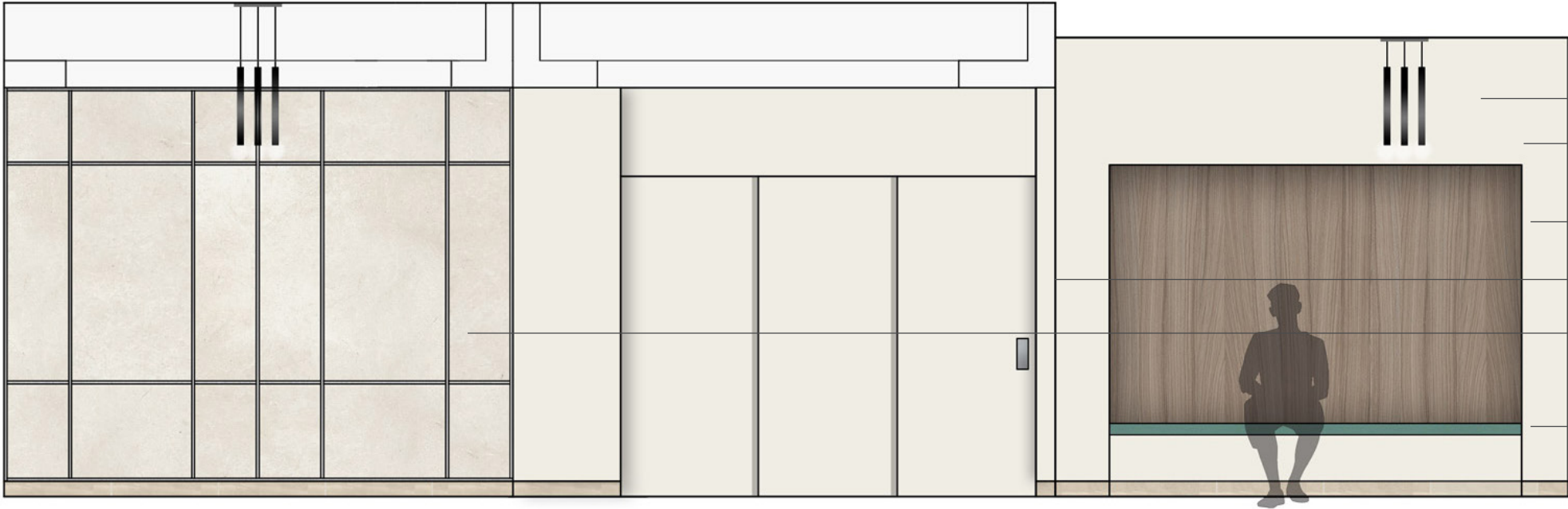
COVE BENCH WITH WOOD LAMINATE  
PANELLING

TELESCOPIC SLIDING DOOR FOR LOBBY  
STORAGE

FEATURE STONE WALL  
POLISHED FINISH WITH REVEALS

VINYL BENCH CUSHION

TILE BASE



ELEVATION: ELEVATORY LOBBY



DESIGN  
ELEVATION  
& DETAIL



FEATURE STONE WALL  
POLISHED FINISH WITH REVEALS

ACCENT WOOD LAMINATE

DESK FEATURING BACK &  
GOLD STONE TOP WITH  
BRASS METAL STRIP

CALACATTA STONE DESK  
BASE POLISHED FINISH

ELEVATION: SECURITY DESK



LINE OF U/S  
OF BULKHEAD

GROMMETS @ +/-3'  
INTERVALS

PROVIDE SURFACE MOUNTED RACEWAYS FOR POWER & DATA COMM

- LINE OF FINISHED FLOOR

5	MILLWORK M502 CABINET ELEVATION & M501 SECTION THROUGH SECURITY DESK
ID60	SCALE: 3/4"=1'-0"



SOCIAL ROOM

PROJECT DESCRIPTION

Updated flooring, furnishing and accessories refresh a roof top social room.

LOCATION / SIZE

Toronto, ON / 2200 Sq.ft.

PROJECT TYPE

Design-Build

ROLE:

space planning & concept development

specification: furniture, finish selection, lighting

presentation

TOOLS

AutoCad / Photoshop / InDesign





INSTITUTIONAL  
DESIGN

## SCHOOL

## PROJECT DESCRIPTION

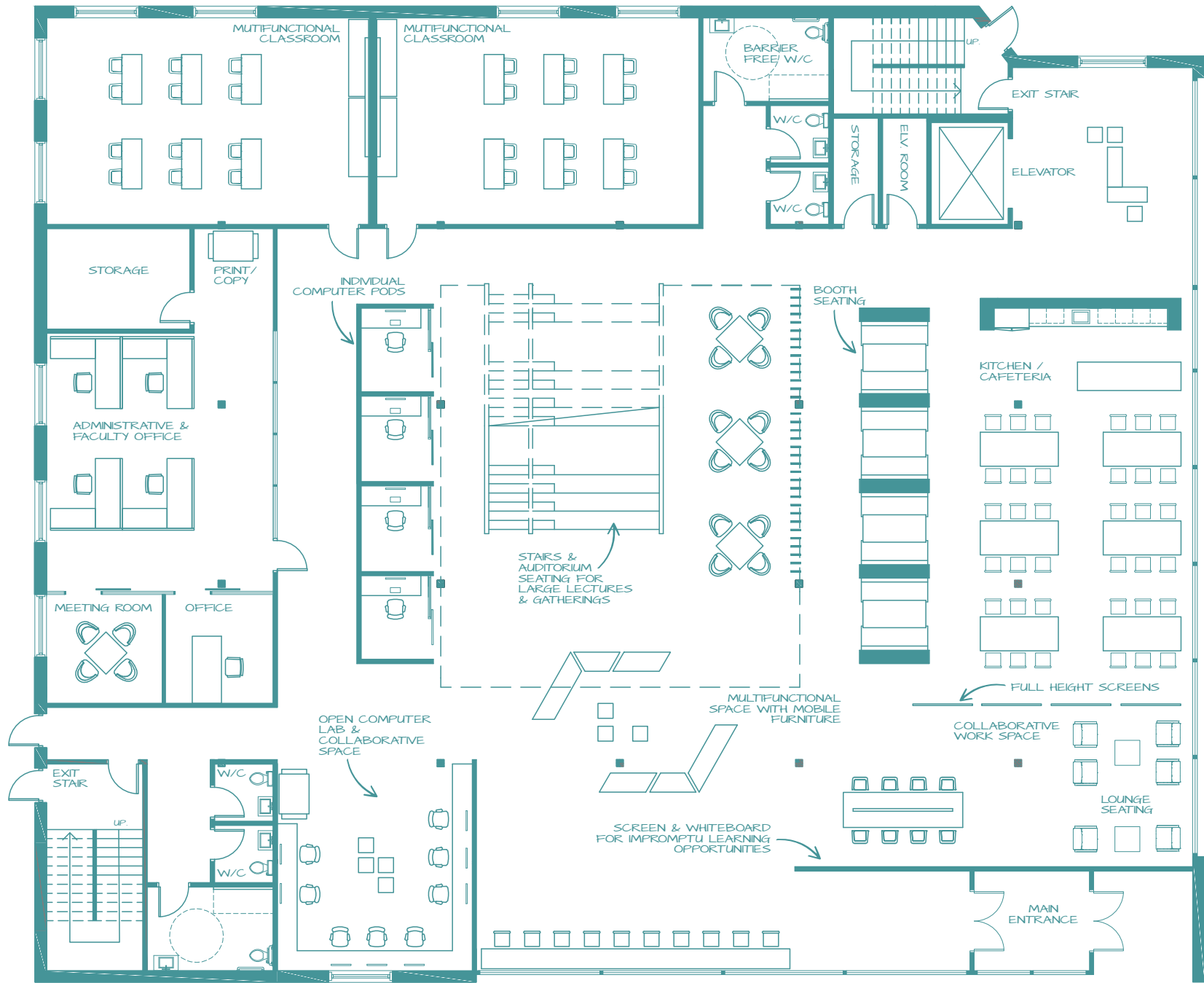
OSSINGTON SCHOOL FOR PERSONALIZED LEARNING is a student centered school designed with the goal of engaging students of all personality types. The project challenges the traditional learning environment and is a model for future learning spaces - one that incorporates the needs of all students rather than through a one size fits all approach.

AutoCad / SketchUp / V-Ray / Photoshop /  
Illustrator

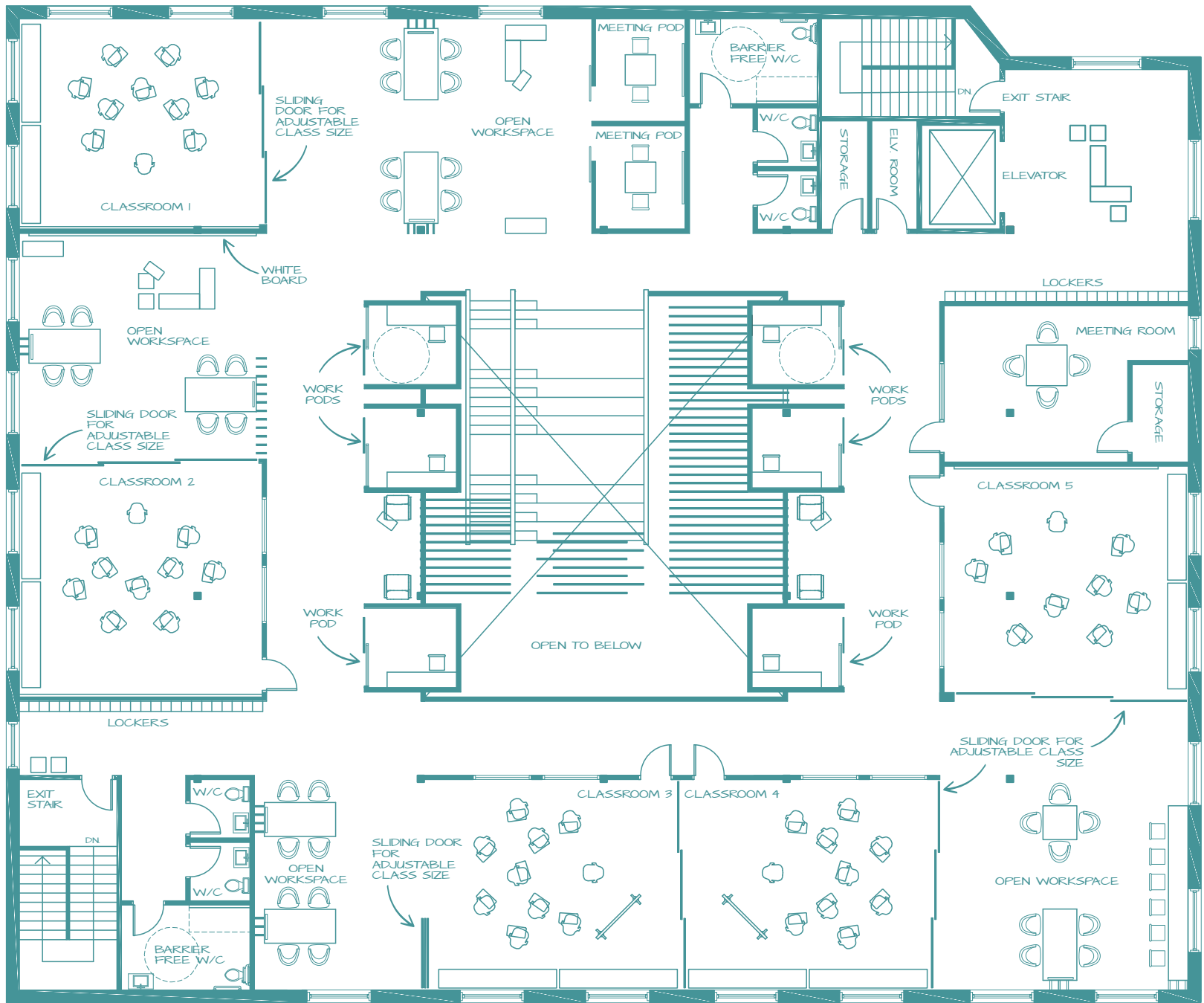
**Humber College:** 4th year project



DESIGN  
PLAN



MAIN LEVEL PLAN



SECOND LEVEL PLAN



DESIGN  
ILLUSTRATIONS /



CLASSROOM & OPEN WORK SPACE



ATRIUM WITH VIEW TO CAFETERIA



ATRIUM / MULTI FUNCTIONAL SPACE



CLASSROOM & OPEN WORK SPACE



CAFETERIA



PROJECT DESCRIPTION

FLUX is a casual restaurant located in the trendy area of Soho in Hong Kong, China. The concept for the restaurant is MOVEMENT. With a population of over seven million people, Hong Kong is one of the most densely populated cities in the world. It is known as being the world's most vertical city, having the best skyline views, for being a busy hub and for having one of the most highly developed transportation networks. Hong Kong is a city of busy energy, activity and dynamic movement. The space was inspired by the motion of the city, its pathways, streets, transit and vertical heights.

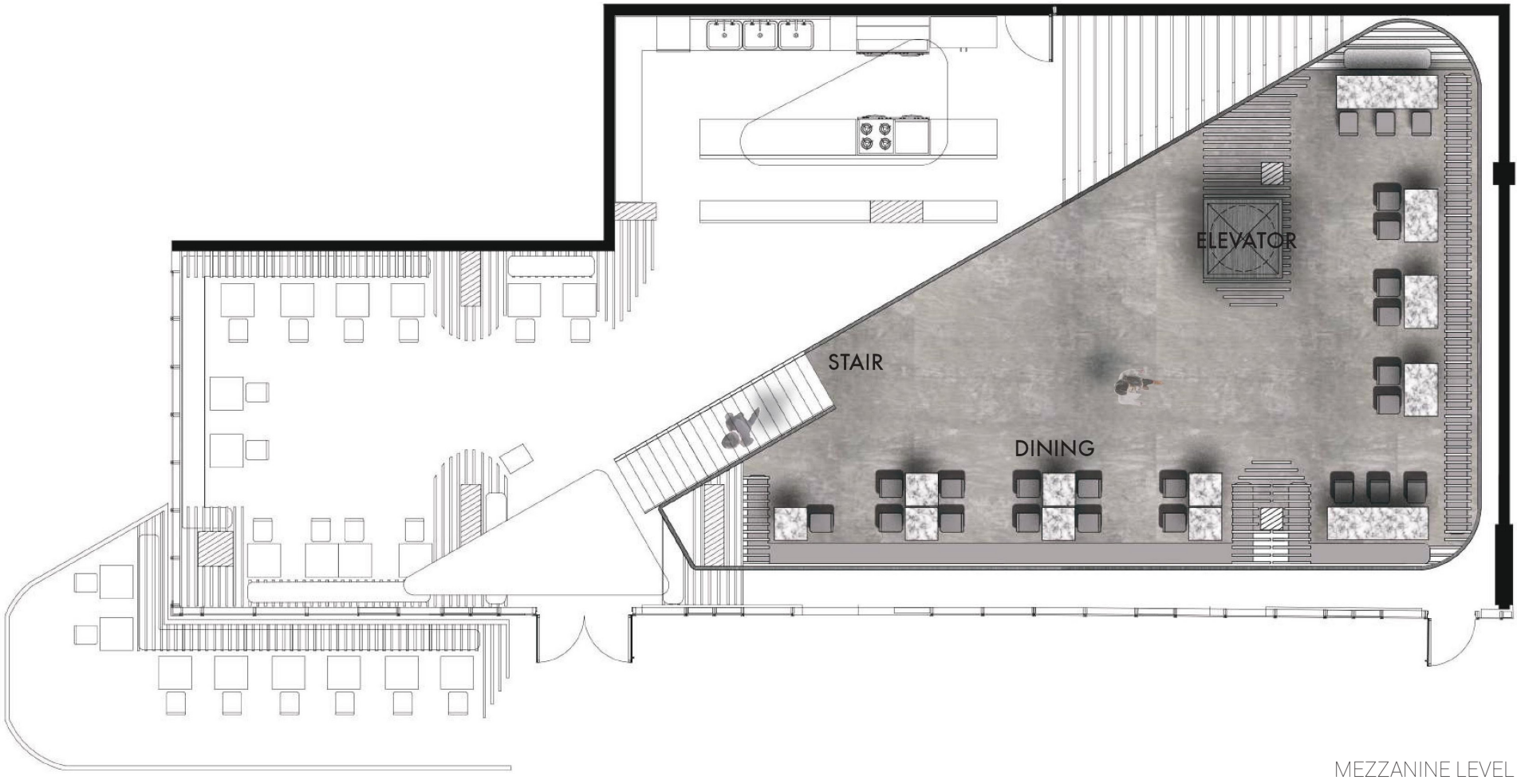
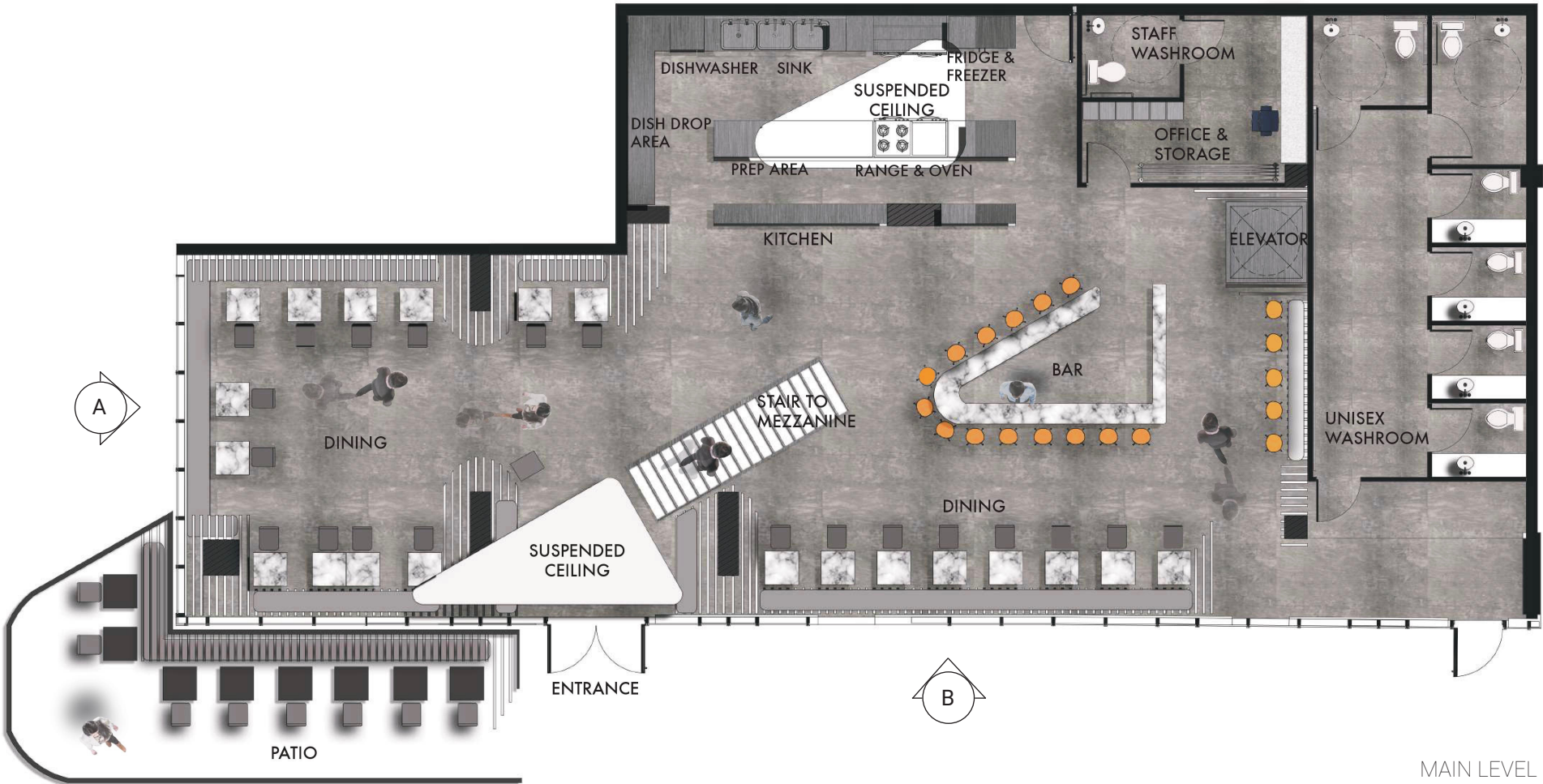
AutoCad / SketchUp / Shaderlight / Photoshop

Humber College: 3rd year project



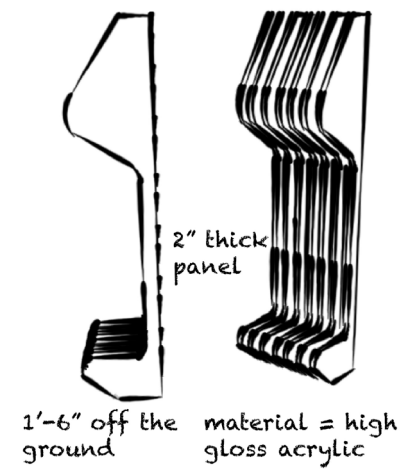


DESIGN  
PLAN /

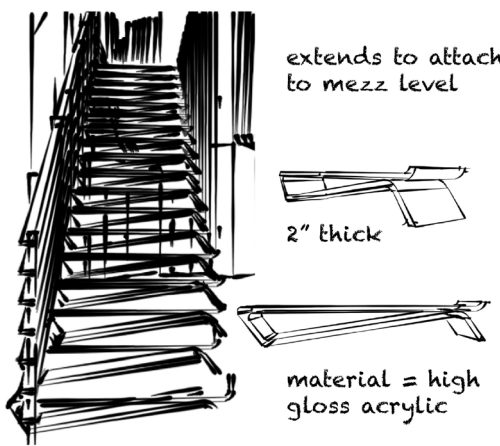


SKETCH  
DETAILS &  
ELEVATIONS

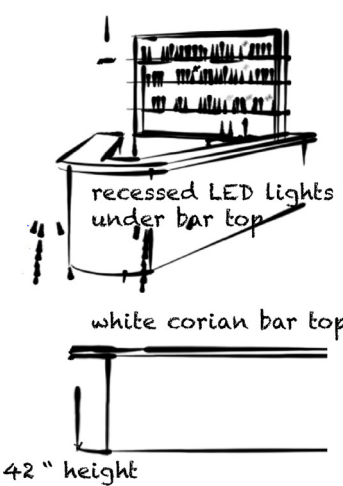
WALL PANEL / SEATING DETAIL



STAIR DETAIL



BAR DETAIL



A: ELEVATION



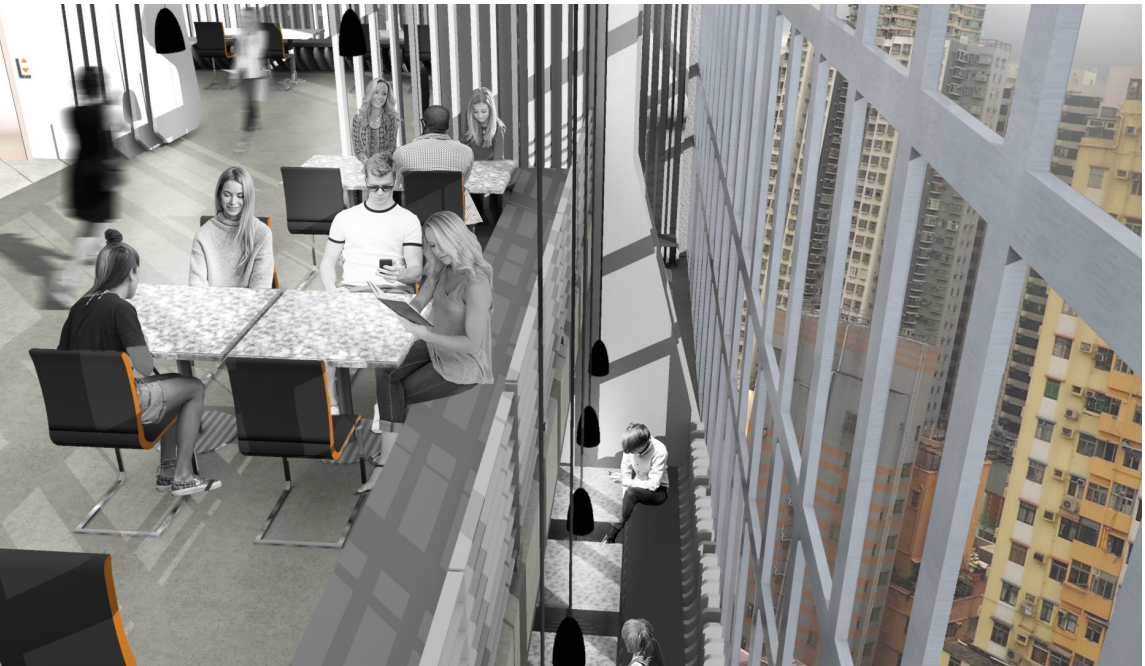
B: ELEVATION



DESIGN  
ILLUSTRATIONS



MEZZANINE LEVEL



MEZZANINE LEVEL WITH VIEW TO BELOW



VIEW OF MAIN LEVEL FROM MEZZANINE



### PROJECT DESCRIPTION

R-SQUARED is a ramen noodle takeout bar inspired by momofuku, a popular noodle bar located on University Avenue in the heart of downtown Toronto. The inspiration for the design of momofuku has been extracted from the ramen dish itself. The imagery of interlacing noodles are mimicked in a simplistic wall feature and other elemental designs, including the use of simple materials such as white oak, cement and steel. The direction for R-squared is a reinterpretation of the design of momofuku restaurant and the concept is REVEAL. The inspiration for this concept is influenced by the function of the takeout box: the opening of tabs and folds to unwrap the treasured meal inside. This process is exemplified in the exterior formation, which consists of a system of folds revealing and unveiling the restaurant piece by piece. The logo 'R-squared' illustrates extracted ingredients and forms found in the traditional ramen noodle takeout box. 'R' indicated the star ingredient - the ramen noodle - while 'squared' signifies the form of the classic takeout container as well as the structure itself.

AutoCad / SketchUp / Photoshop

**In collaboration with:** Emily Brown / Ruxandra Patrasc / Renya Tensuda

**Humber College:** 3rd year project





DESIGN  
ILLUSTRATIONS &  
ELEVATIONS

